

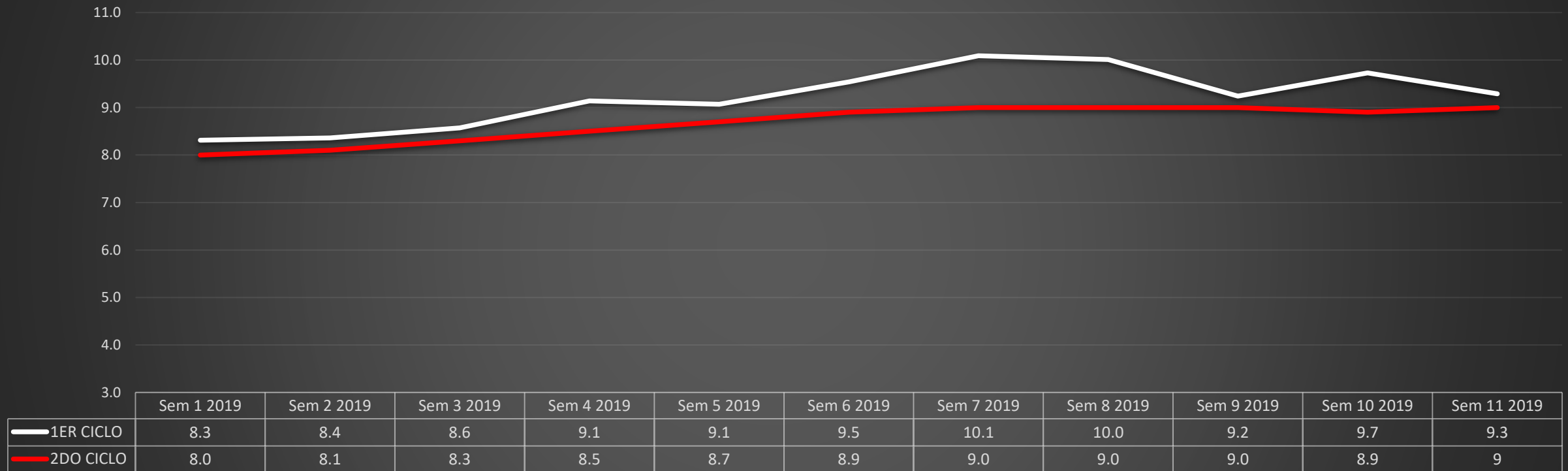


SW NOVA AUSTRAL
PURE SALMON FROM ANTARTIC WATERS

**PRODUCTION REPORT_SW_
WEEK_11_2019**

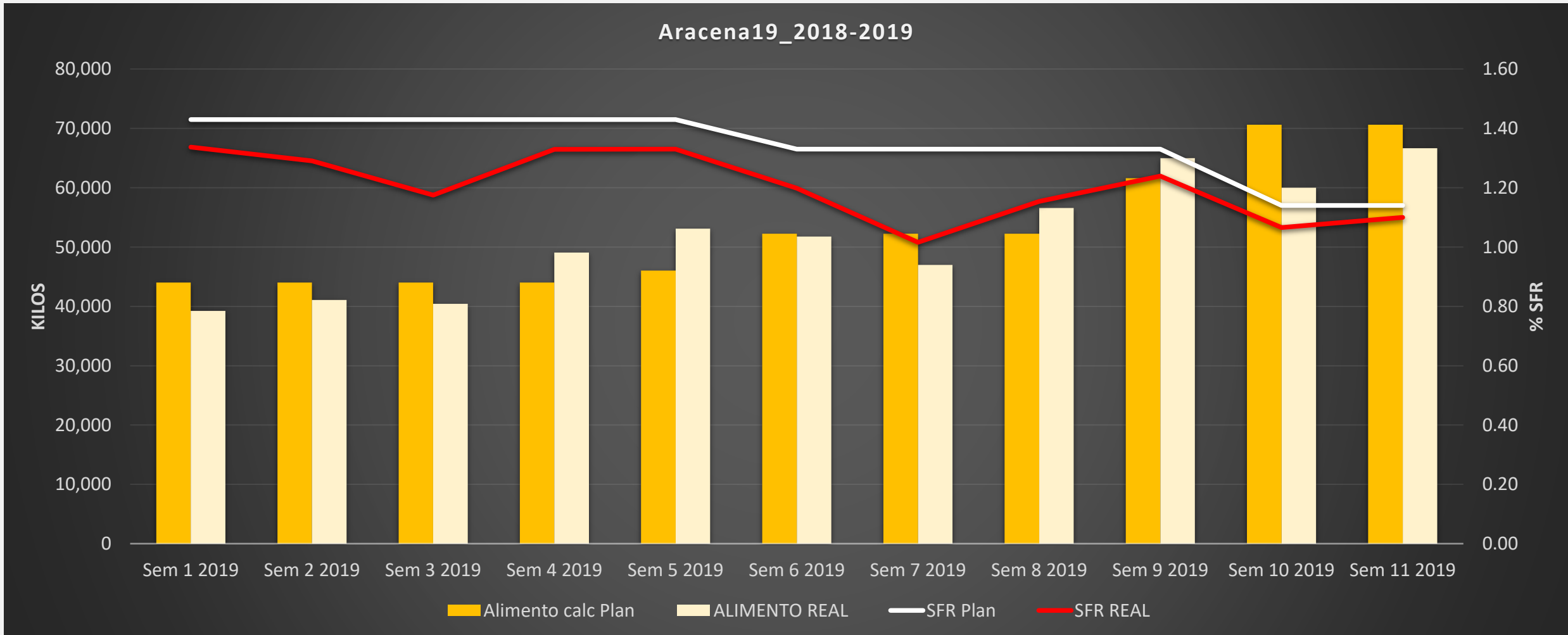
ARACENA19_G2018_PRIMAVERA

Aracena19_Temperatura



ARACENA19_G2018_PRIMAVERA

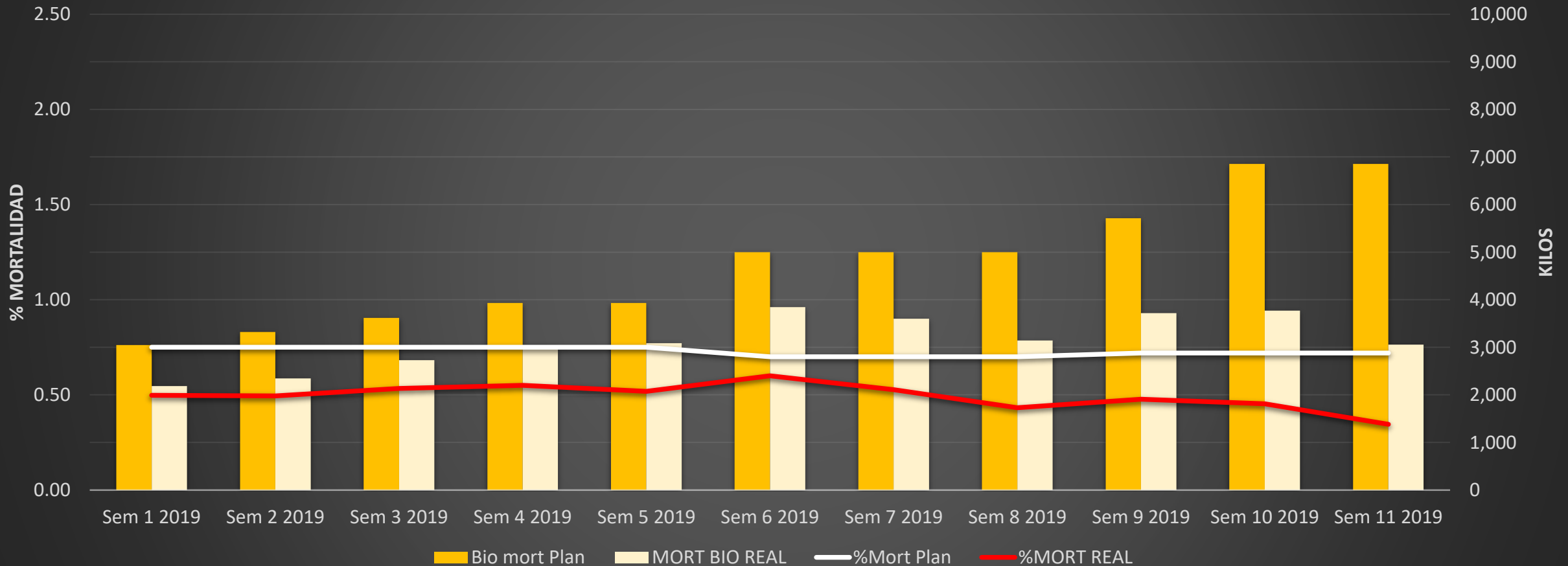
ALIMENTACIÓN Y SFR POR SEMANA



ARACENA 19 G2018_PRIMAVERA

MORTALIDADES POR SEMANA

Aracena19_2018-2019



ARACENA 19_G2018_PRIMAVERA

CAUSES OF MORTALITY

		Week Mortality Week 11_2019							
Jaula	Origen Hatchery	BKD	Baja de Oxigeno	Deforme	Desadaptado/ Rezagado	Lobo	Muestras	Total	% Mort
1	TRAFUN	137		5	22			164	0.38
2	TRAFUN	148		9	24			181	0.43
3	TRAFUN	215		4	21			240	0.55
4	TRAFUN	94		9	15			118	0.25
5	TRAFUN	151		12	20			183	0.41
6	TRAFUN	164		6	21			191	0.36
7	TRAFUN	81		2	19			102	0.23
8	TRAFUN	137		16	16			169	0.30
9	TRAFUN	113		3	18			134	0.27
10	TRAFUN	124		11	25			160	0.30
11	TRAFUN	110		8	19			137	0.32
12	TRAFUN	102		10	24			136	0.25
13	TRAFUN	129		6	16			151	0.28
14	TRAFUN	126		7	20			153	0.52
15	TRAFUN	80		2	14			96	0.43
16	TRAFUN	100		5	17			122	0.45
17	TRAFUN	82		5	10			97	0.29
18	TRAFUN	99		2	16			117	0.31
19	TRAFUN	98		6	16			120	0.35
20	TRAFUN	145		10	16			171	0.43
TOTALES		2,435		138	369			2,942	0.35
		82.77%	0.00%	4.69%	12.54%	0.00%	0.00%	100.00%	

ARACENA19_G2018_PRIMAVERA

COMENTARIOS GENERALES

ARACENA_19

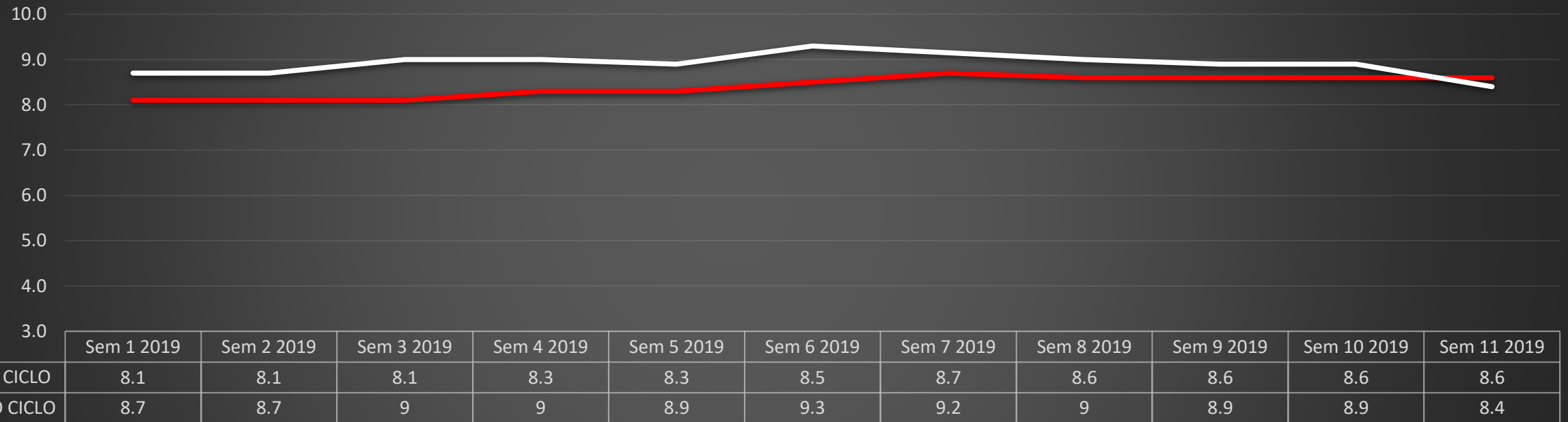
	Jaula1	Jaula2	Jaula3	Jaula4	Jaula5	Jaula6	Jaula7	Jaula8	Jaula9	Jaula10
Fecha Ultimo lavado	10-03-2019	10-03-2019	10-03-2019	10-03-2019	12-03-2019	12-03-2019	12-03-2019	12-03-2019	13-03-2019	13-03-2019

	Jaula11	Jaula12	Jaula13	Jaula14	Jaula15	Jaula16	Jaula17	Jaula18	Jaula19	Jaula20
Fecha Ultimo lavado	13-03-2019	13-03-2019	14-03-2019	14-03-2019	14-03-2019	14-03-2019	08-03-2019	08-03-2019	08-03-2019	08-03-2019

SFR	1.10	Comentary Feed : Increases by 3% more SFR with respect to previous week and lacked 4% to reach weekly goal of 70.6 ton or SFR of 1.14. Feeding strategy, 2 servings daily to 2 cups, total satiety in each ration Without photoperiod. Mortality : Mortality decreased by 24% with respect to the previous week and decreased by 54% with respect to the expected weekly rate of 0.72%. 83% of the fish die by BKD and 17% are stragglers. No predator attack.
Promedio Temperatura	8.90	
Nivel de Oxig. (mg/lit)	6.0	
Mortalidad	BKD y Desadaptados	
Explicacion		
Caligus		
Jaulas Muestreadas	1-2-3-4-17-18-19-20	
No, Porque?		

ARACENA 2_G2017_VERANO

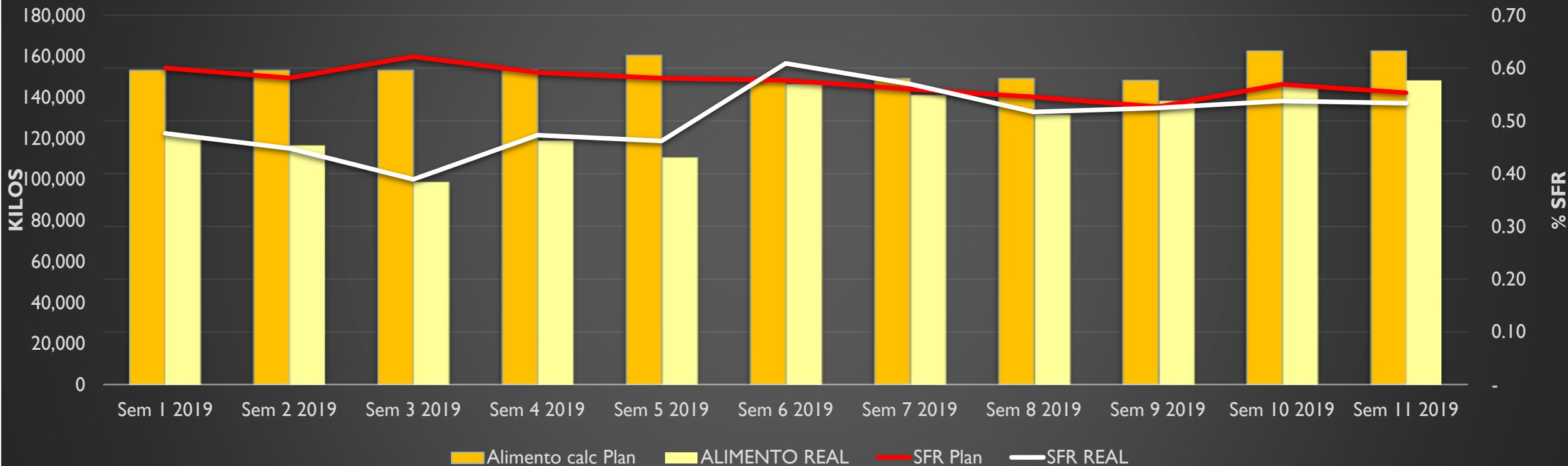
Aracena2_Temperatura



ARACENA 2_G2017_VERANO

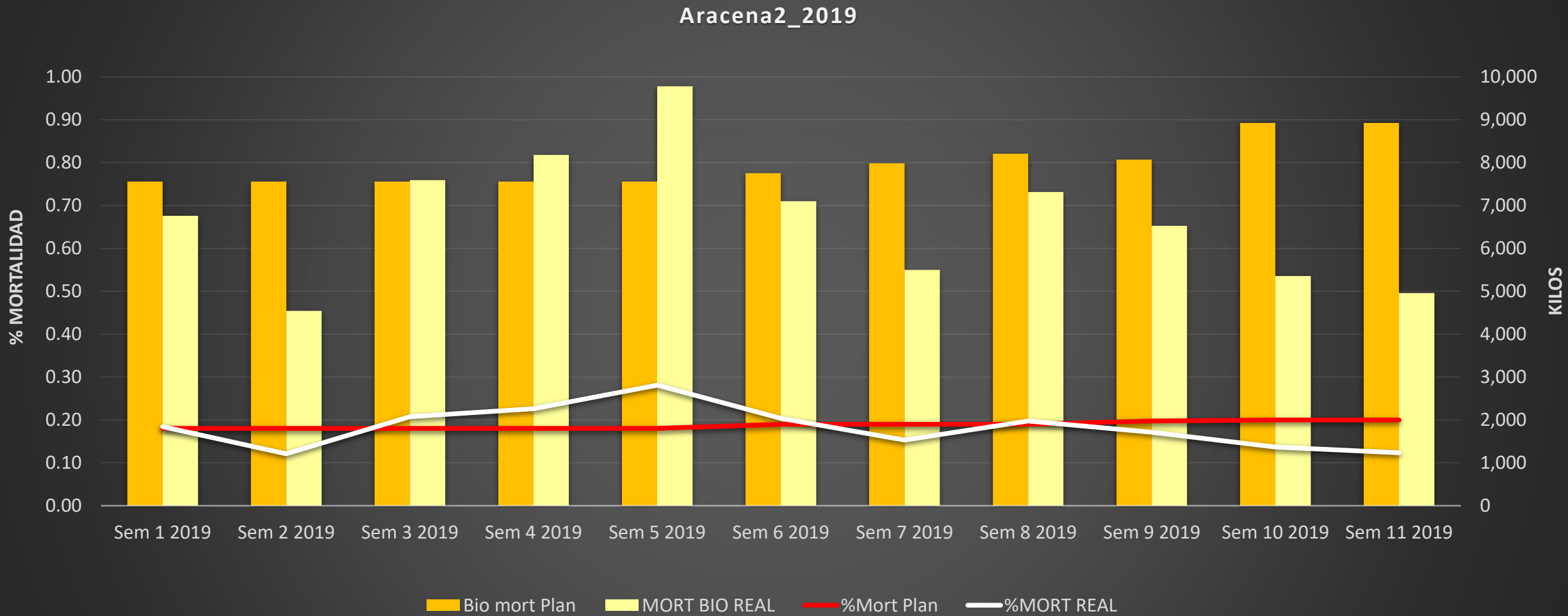
ALIMENTACIÓN Y % SFR

Aracena2_2019



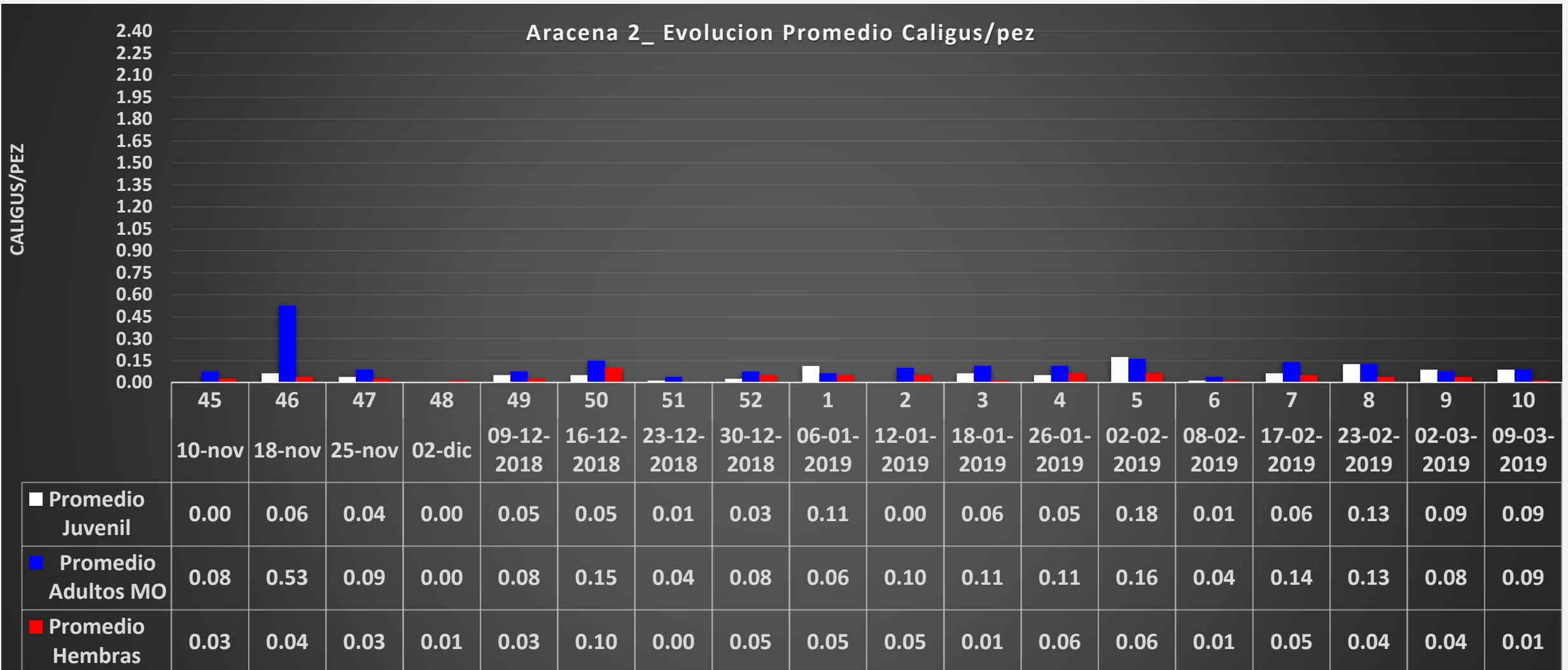
ARACENA 2_G2017_VERANO

MORTALIDAD BIOMASA Y % MO/SEMANA



ARACENA 2_G2017_VERANO

CALIGUS/SEMANA



ARACENA 2_G2017_VERANO

CAUSES OF MORTALITY

Week Mortality W11_2019									
Jaula	Origen Hatchery	BKD	Daño Mecanico	Deforme	Desadaptado/ Rezagado	Muestras	Lobo	Total	% Mort
2	Trafun	64		8	23			95	0.09
4	Trafun	40		8	23			71	0.08
5	Trafun	82		7	27			116	0.15
6	Trafun	62		8	19			89	0.21
7	Trafun	108		10	32			150	0.17
8	Trafun	78		11	27			116	0.13
9	Trafun	83		8	39			130	0.14
10	Trafun	52		8	23			83	0.09
11	Trafun	80		8	29			117	0.11
12	Trafun	81		9	33			123	0.12
TOTALES		730	0	85	275	0	0	1,090	0.12
		67.0%	0.0%	7.8%	25.2%	0.0%	0.0%	100.0%	

ARACENA2_G2017_VERANO

COMENTARIOS GENERALES

ARACENA_2

	Jaula1	Jaula2	Jaula4	Jaula5	Jaula6	Jaula7	Jaula8	Jaula9	Jaula10	Jaula11	Jaula12
Fecha Ultimo lavado	16-03-2019	16-03-2019	15-03-2019	15-03-2019	15-03-2019	15-03-2019	14-03-2019	14-03-2019	13-03-2019	14-03-2019	13-03-2019

SFR	0.53	Comentary
Promedio Temperatura	8.40	Consumption drops 1% compared to the previous week and is 4% below the expected weekly rate of 162.3 ton or SFR of 0.55%.
Nivel de Oxig. (mg/lit)	6.38	2-3 tations are delivered at 2-3 rates, depending on the environmental conditions (low oxygen).
		Oxygen losses are generated that lower the daily SFR, activating the aeration system.
Mortalidad	BKD y	
Explicacion	0.12	
Caligus		% Mortality decreases by 10%, compared to the previous week and is 38% lower than expected by 0.20% weekly.
Jaulas Muestreadas	1-2-4-6	67% of mortality is attributable to BKD and 33% to stray fish.
No, Porque?		